



Compiere ERP & CRM Installation Instructions Linux System - Oracle Database

Compiere Learning Services Division

Table of Contents

Compiere ERP & CRM Installation Instructions – Linux System Oracle Database

Compiere ERP & CRM - Installation Instructions – Oracle **3**

Prerequisites	3
Database Installation	3

Compiere 3.0 New Installation Instructions **6**

Java Installation	6
Download Compiere	6
Complete Server Setup	10
Start Compiere	11

Compiere ERP & CRM - Installation Instructions – Oracle

Prerequisites

- Database approved Linux Operating System
- Disk Space: > 5 GB (includes database)
- Swap Space: > 1GB
- Recommended: Hardware RAID 10
- Memory: > 512 MB - Recommended: > 1 GB
- TCP/IP connection
- Packages: glibc 2.3.2 and libaio 0.3.96
- Web browser that supports JavaScript and the HTML 4.0 and CSS 1.0 standards

Note: It will ease the installation tremendously, if you have your network set up with **DNS** server and a domain (actually a must for non-Windows environments). Check with your system administrator - do NOT use IP addresses, but names!

Database Installation

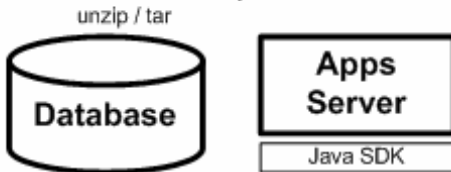
1. Install Database



2. Install Java



3. Download Compiere



4. Setup Compiere



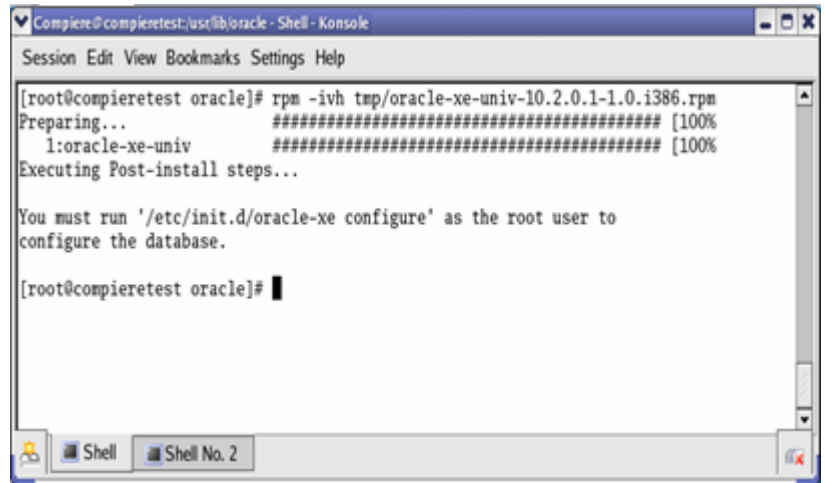
5. Complete Server Setup



1. Install Database – this document will use Oracle XE. While Oracle XE is free to use without any license fee, it is your responsibility to ensure you have the appropriate version and licenses. For any other Oracle Edition (Standard One, Standard, Enterprise) please see the appropriate Oracle documentation.

- 1) Get the Oracle Database 10g Express Edition (Universal) for Linux x86 package file from the installation CDs or download the images from the Oracle site (<http://www.oracle.com/technology/software/products/database/x/index.html>) Make sure download the Universal version.
- 2) Log on with root permissions
- 3) For Linux operating systems that use Debian execute
`dpkg -i oracle-xe-univ-10.2.0.1-1.0.i386.deb`
For all other supported Linux operating systems
`rpm -ivh oracle-xe-univ-10.2.0.1-1.0.i386.rpm`

- 4) Run the command `/etc/init.d/oracle-xe configure`.



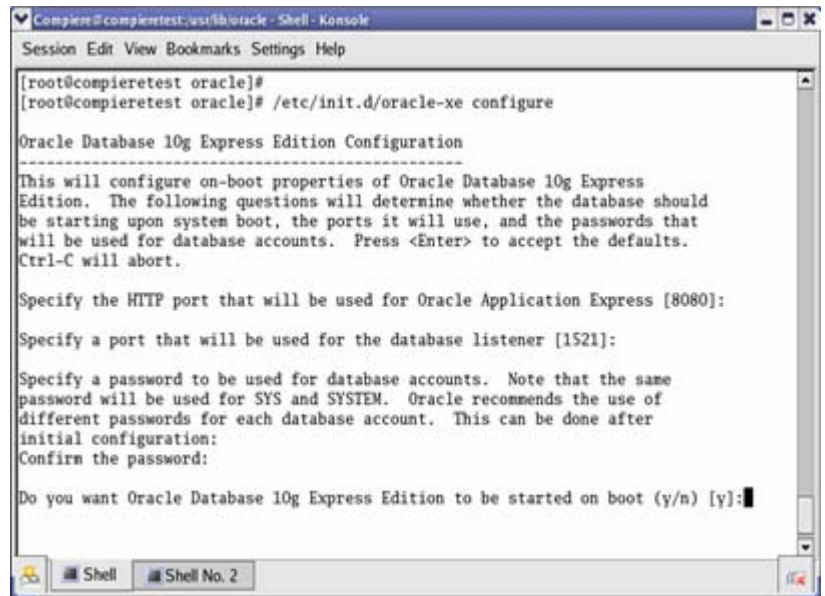
```
Compiere@compiere:~/usr/lib/oracle - Shell - Konsole
Session Edit View Bookmarks Settings Help

[root@compiere:~/usr/lib/oracle]# rpm -ivh tmp/oracle-xe-univ-10.2.0.1-1.0.i386.rpm
Preparing... ##### [100%]
1:oracle-xe-univ ##### [100%]
Executing Post-install steps...

You must run '/etc/init.d/oracle-xe configure' as the root user to
configure the database.

[root@compiere:~/usr/lib/oracle]#
```

- 5) Specify or accept the values for the following:
 - HTTP port
 - Listener port
 - Sys and System passwords.
- 6) Then select whether to start the database automatically when the computer starts



```
Compiere@compiere:~/usr/lib/oracle - Shell - Konsole
Session Edit View Bookmarks Settings Help

[root@compiere:~/usr/lib/oracle]# /etc/init.d/oracle-xe configure

Oracle Database 10g Express Edition Configuration
-----
This will configure on-boot properties of Oracle Database 10g Express
Edition. The following questions will determine whether the database should
be starting upon system boot, the ports it will use, and the passwords that
will be used for database accounts. Press <Enter> to accept the defaults.
Ctrl-C will abort.

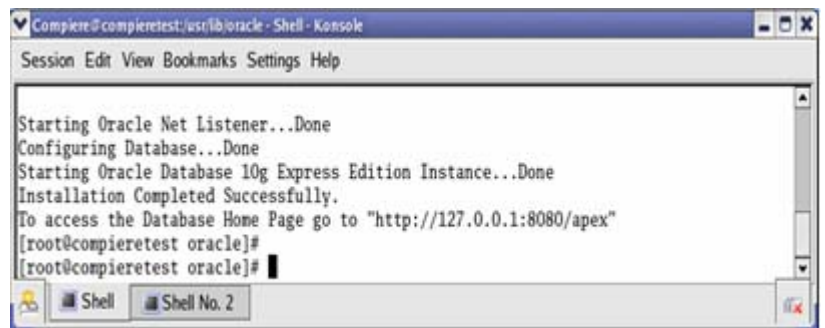
Specify the HTTP port that will be used for Oracle Application Express [8080]:

Specify a port that will be used for the database listener [1521]:

Specify a password to be used for database accounts. Note that the same
password will be used for SYS and SYSTEM. Oracle recommends the use of
different passwords for each database account. This can be done after
initial configuration:
Confirm the password:

Do you want Oracle Database 10g Express Edition to be started on boot (y/n) [y]:
```

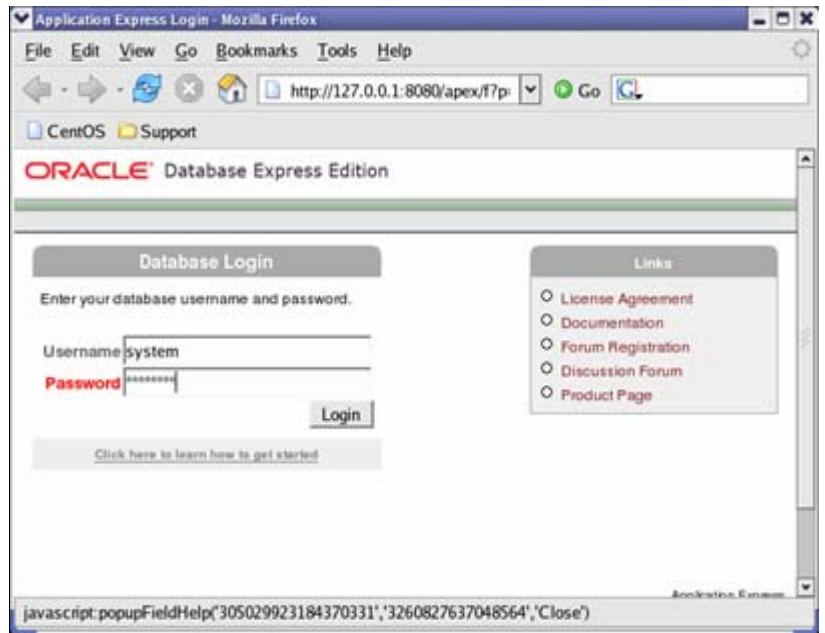
- 7) Launch the Database homepage:
`http://host:port/apex` -
(i.e., `http://localhost:8080/apex`)



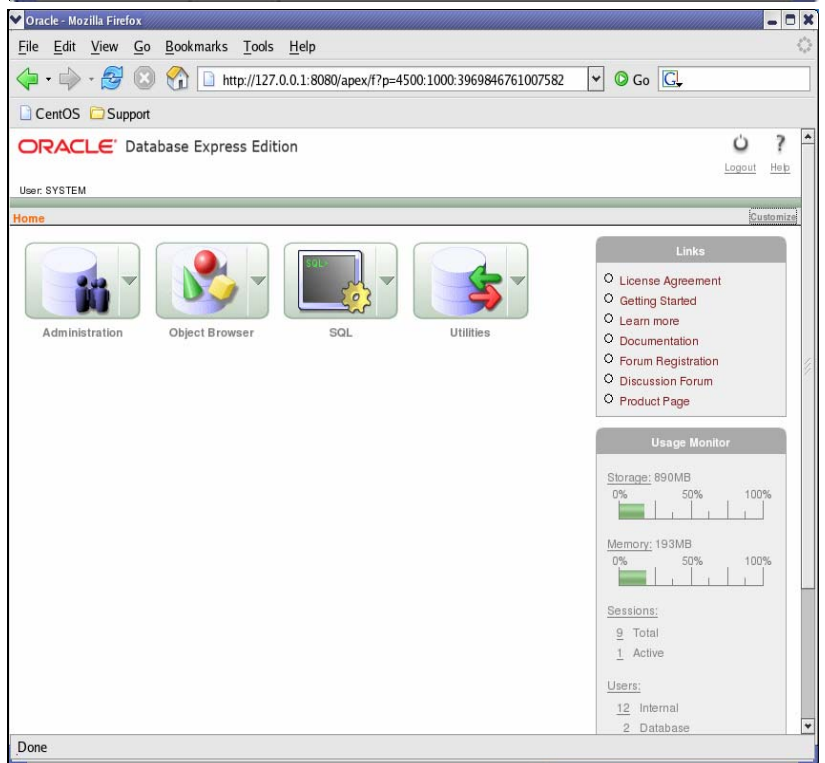
```
Compiere@compiere:~/usr/lib/oracle - Shell - Konsole
Session Edit View Bookmarks Settings Help

Starting Oracle Net Listener...Done
Configuring Database...Done
Starting Oracle Database 10g Express Edition Instance...Done
Installation Completed Successfully.
To access the Database Home Page go to "http://127.0.0.1:8080/apex"
[root@compiere:~/usr/lib/oracle]#
```

- 8) Enter a Username of SYSTEM and the Password entered in step 5.



- 9) The database Home Page is loaded.
Hint: This confirms the Database Installation.



Compiere 3.0 New Installation Instructions

Java Installation

1. Download and install [Sun Java 1.5.0](#) (SDK) – also known as Sun Java JDK, Update 12, or a later version.
Note: The Compiere Server requires the SDK (not just JRE).

Download Compiere

2. Install /Setup Compiere Server (this includes the Client as well)
 - 1) Download the current version of Compiere: [Download Compiere](#). (3.0 or higher)
 - 2) Extract the .zip file. The steps shown assume that you extract to the root directory, resulting in a COMPIERE_HOME of C:\Compiere2 in Windows or \Compiere2 in Linux.
 - 3) Verify that the bin directory for your database executables is included in the PATH. Also, if using Oracle XE on Linux, run \$ORACLE_HOME/bin/oracle_env.sh
 - 4) Execute the script \$COMPIERE_HOME/RUN_Setup.
Note: if the following window does not display, please ensure that the following are updated.
 - Add the folder where you have installed JKD 1.5 at the beginning of the **PATH** system environment variable.
 - Set the **JAVA_HOME** system variable to the location of your java installation (e.g., 'C:\Program Files\Java\jdk1.5.0_12')
 - Set the **COMPIERE_HOME** system variable to the path of your Compiere installation (e.g., 'C:\Compiere2')

- 5) Select Database Type of OracleXE.
- 6) For System Password, enter the System User password specified earlier.
- 7) For Database Password, enter 'compiere.'
- 8) For Server Names, i.e., (Application, Database and Mail) use the DNS name of the server. *Hint:* Do not use localhost (127.0.0.1) or IP address
- 9) Enter or update the Parameters as necessary.
- 10) Select the Help button, for information on any field.

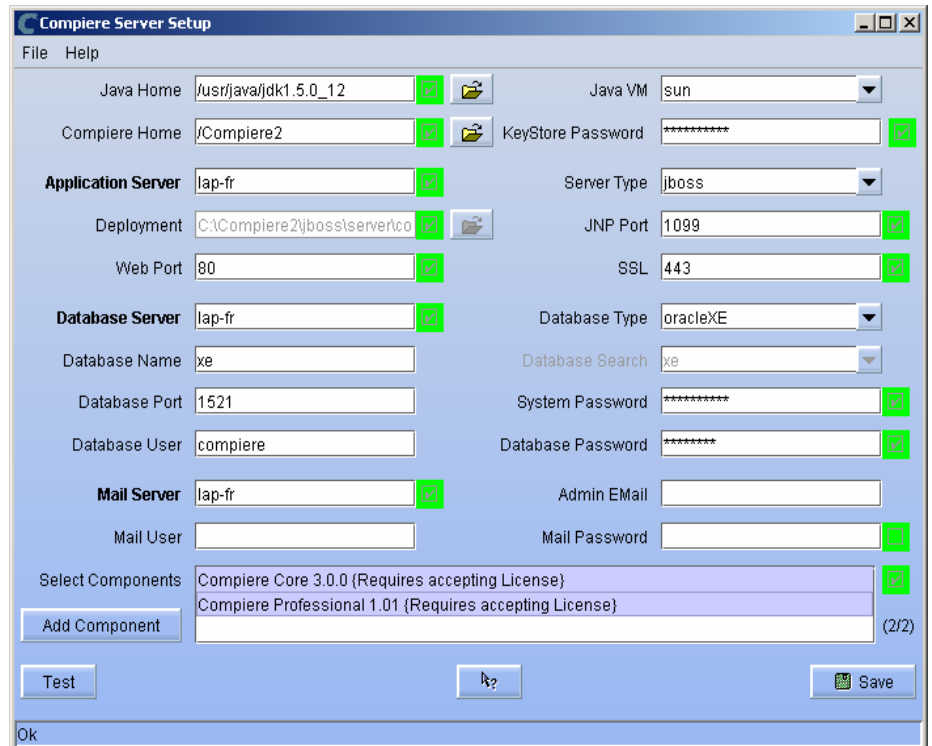
The screenshot shows the 'Compiere Server Setup' window with the following configuration details:

- Java Home: /usr/java/jdk1.5.0_12
- Compiere Home: /Compiere2
- Application Server: lap-fr
- Deployment: C:\Compiere2\jboss\server\co
- Database Server: lap-fr
- Database Name: xe
- Database Port: 1521
- Database User: compiere
- Mail Server: lap-fr
- Mail User: (empty)
- Java VM: sun
- KeyStore Password: (masked)
- Server Type: jboss
- JNP Port: 1099
- SSL: 443
- Database Type: oracleXE
- Database Search: xe
- System Password: (masked)
- Database Password: (masked)
- Admin EMail: (empty)
- Mail Password: (empty)
- Select Components: Compiere Core 3.0.0 (Requires accepting License), Compiere Professional 1.01 (Requires accepting License)

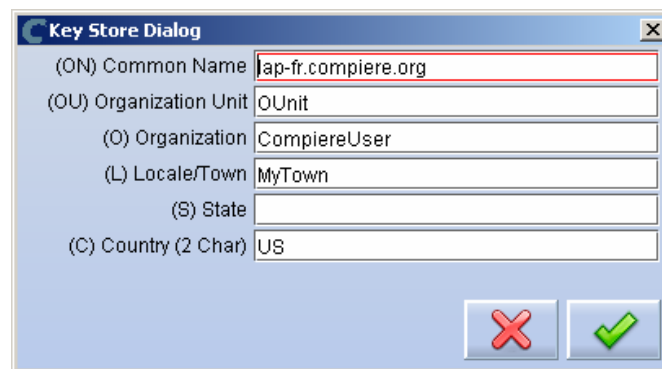
- 11) Select the Components to install. Compiere Core 3.0 is the main component that must always be installed, but you may choose additional components provided by Compiere or any of our authorized partners.

Note: To install additional components after you have already installed or migrated to the latest Compiere Core version, you must select the Compiere Core component plus any additional components that you wish to install, and then run Migration.

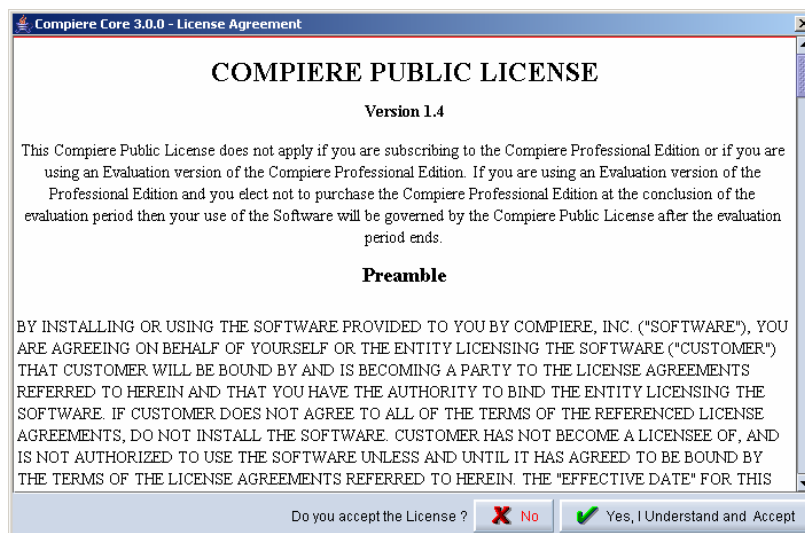
- 12) Select the Test button to check the parameters. The parameters will save once verified.
- 13) If an entry is unverifiable, it will display with a red X. Correct the entry and re-select Test/Save.
- 14) Once all fields are verified, click the Save button to proceed.



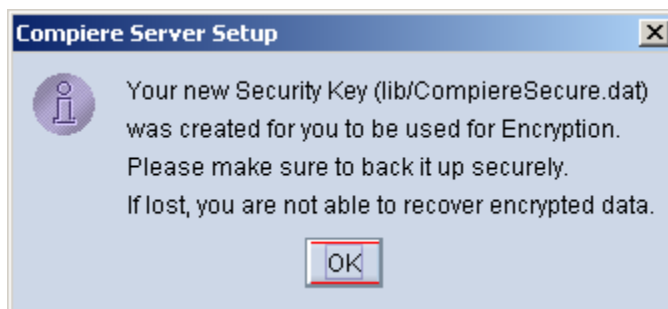
- 15) At the prompt enter your company information as appropriate and verify that the common name is the address of your application server. Once all fields are complete, click ok to continue.



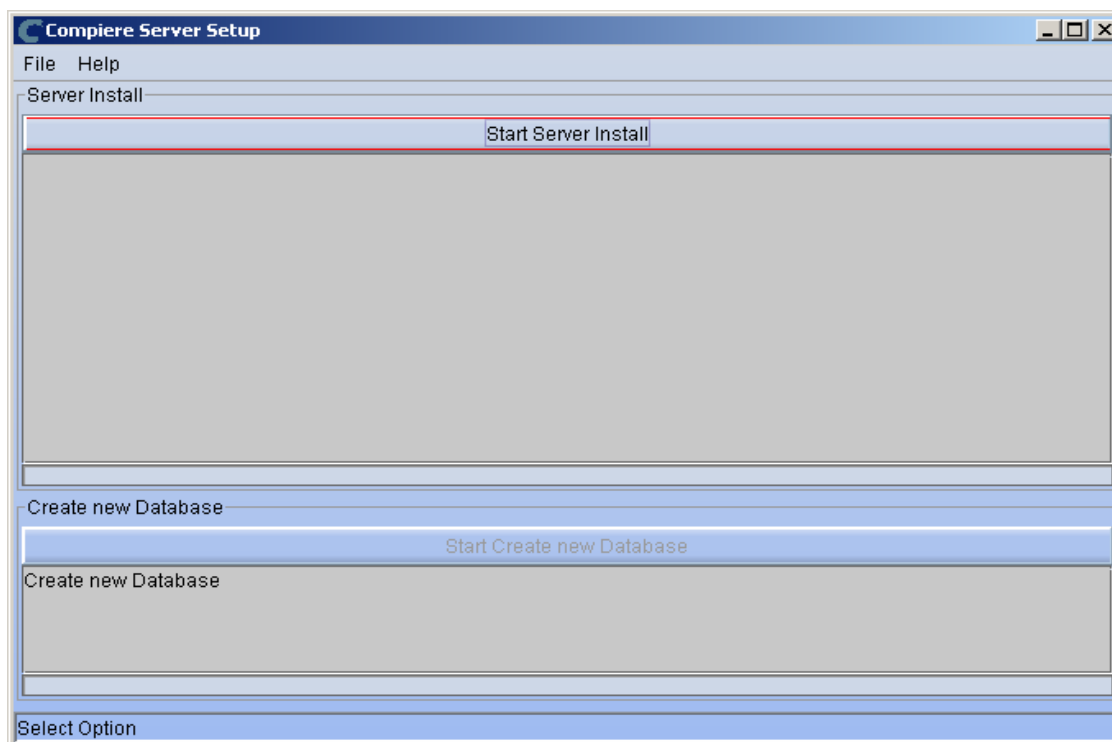
- 16) Next, read and accept the license agreement.
Note: You might get more than one license agreement, depending on the components that you are installing.



17) A default security key will be generated, click 'Ok' to proceed.



18) After accepting the license agreement the following window will display:



19) Select Start Server Install.

20) Once the Server install is complete, select Create New Database.

Note: If you already have a Compiere database in your system, you will be presented with a split panel after 'Start Server Install'. Click the left panel if you want to replace the existing database with the new database.

Warning: If you choose to replace the existing database, all data in the existing database will be removed

21) Verify that you see a 'Build Successful' and '***Finished' message at the end of this step.

LICENSE VALIDATION

If you only intend to use the Open Source Edition of Compiere 3.0, you may skip steps 21 and 22.

For customers with a valid support contract with Compiere, this is a required step to ensure that the features associated with the support level are enabled. If you are a customer and do not have a web store login, please contact your system administrator or Compiere Support first. If you are not a customer and would like to obtain a trial license for the Professional Edition, use the following steps to register with Compiere:

- Go to www.compiere.com/wstore, and click Login.
- If you are a new user, click 'New User' and provide the required information.
- Then Login to the web store. If you are a new user you will have to validate your e-mail address by providing the validation code that was sent to your email inbox.

22) Provide the following information exactly as it was registered in the Compiere Web store and click Check License to validate your asset information.

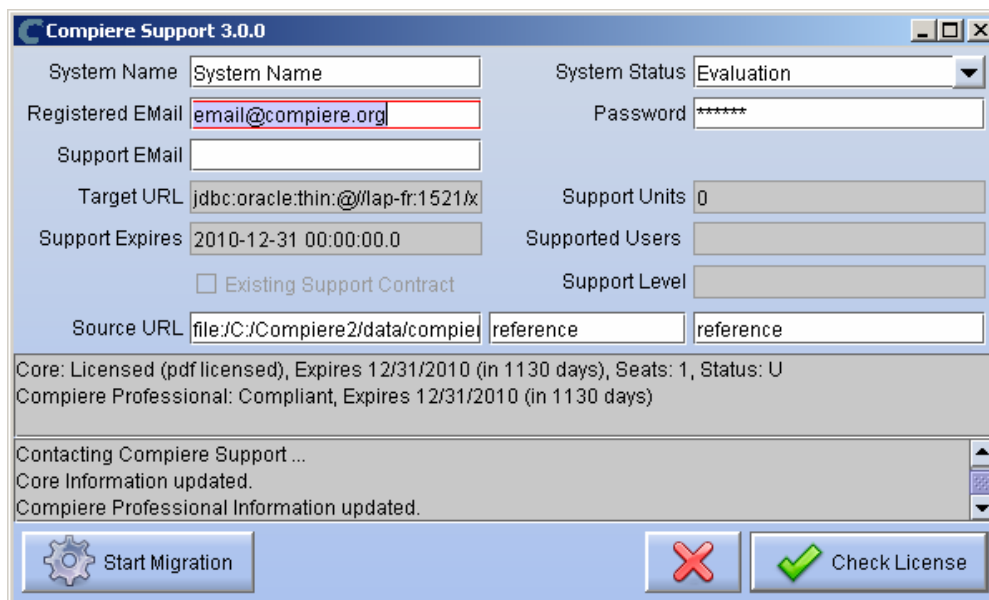
- System Name (name provided in the web store registration)
- Registered Email (email address provided in the web store registration)
- Password (web store password)

Tip: During the Next steps, do not click Start Migration; simply Check License and Close the window. Notice that internet access is required to validate the license information

23) To verify your license, click the "Check License" button.

The screenshot shows a dialog box titled "Compiere Support 3.0.0". It contains several input fields and a status section. The fields are: System Name (with a question mark), Registered EMail (with a question mark), Support EMail, Target URL (jdbc:oracle:thin:@lap-fr:1521/x), Support Expires, Existing Support Contract (checkbox), Source URL (file:C:/Compiere2/data/compie), System Status (Evaluation), Password (*), Support Units (0), Supported Users, and Support Level. Below the fields, it says "Core: Not Licensed" and "Compiere Professional: Not Licensed". At the bottom, there are three buttons: "Start Migration" (with a gear icon), a red "X" button, and "Check License" (with a green checkmark icon). A message at the bottom says "Check entries and press OK to submit."

24) Review that your license information has been validated.



25) After Compiere Professional license has been verified, click the “X” to close the window.

Note: If you get the error “You do not have an appropriate license to use this feature” when starting the web UI, then login to the server and execute `utils/RUN_Support` to validate again your license and restart the application server.

26) Close any additional Setup and /or Support windows.

Complete Server Setup

3. Start the Compiere Application Server

- 1) To start the JBoss based Compiere Application Server execute **RUN_Server2** in the `$COMPIERE_HOME/utils` directory.
- 2) There should be no errors. Check the logs in `$COMPIERE_HOME/jboss/server/compiere/logs` to verify this.
- 3) Common problems include ports already in use
 - 17:41:09,085 ERROR [NamingService] Could not start on port 1099
java.net.BindException: Address already in use: JVM_Bind
at java.net.PlainSocketImpl.socketBind(Native Method)
 - There is another program using port 1099; Stop it and restart `Run_Server2`
or setup Compiere to use another port in `RUN_setup`. Likely port conflicts:
 - 80 - You have some other web server running (or you need privileges under Linux/Unix)
 - 8080 - The Oracle Database uses that
 - 1099 - Often used by IDEs for debugging

Start Compiere

4. Start the Compiere Client

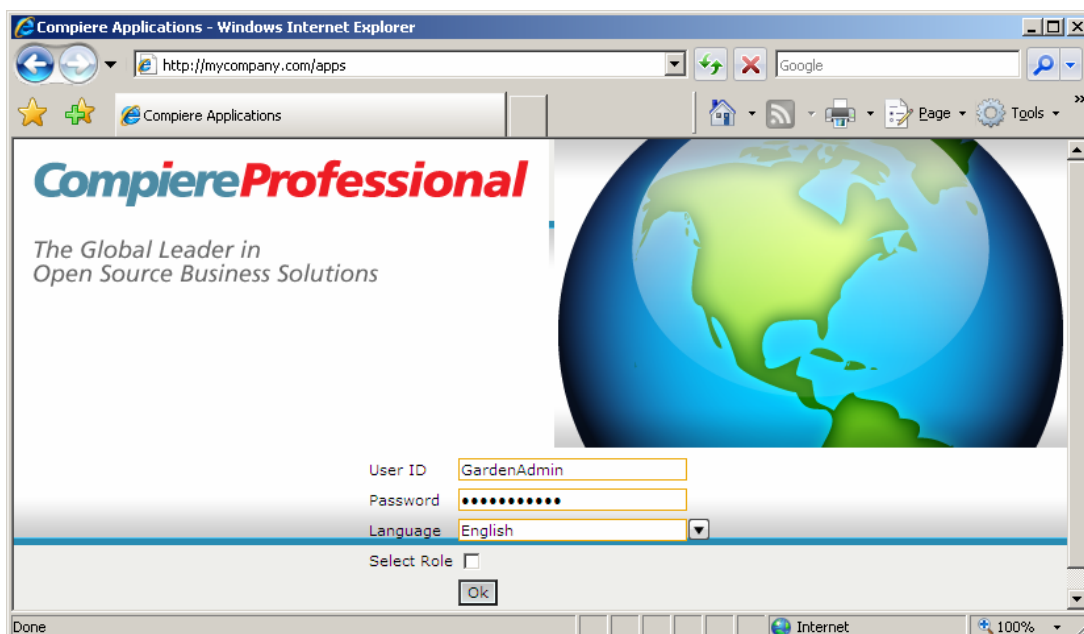
- 1) Start the Swing client by double clicking on the Compiere shortcut in your desktop or by executing **RUN_Compiere2** from the \$COMPIERE_HOME directory.

Default users and passwords for the sample Garden World application

- GardenUser/GardenUser
- System/System
- GardenAdmin/GardenAdmin
- SuperUser/System



- 2) Alternatively, if you have access to the Professional Edition, you can launch the application from the browser by using the URL: <http://server:port/apps> (e.g. <http://mycompany.com:80/apps>)



Information: For additional information see the Compiere home page <http://www.compiere.com>.